



FIRST CLASS EMERGENCY
PLANNING & MANAGEMENT

ARE YOU

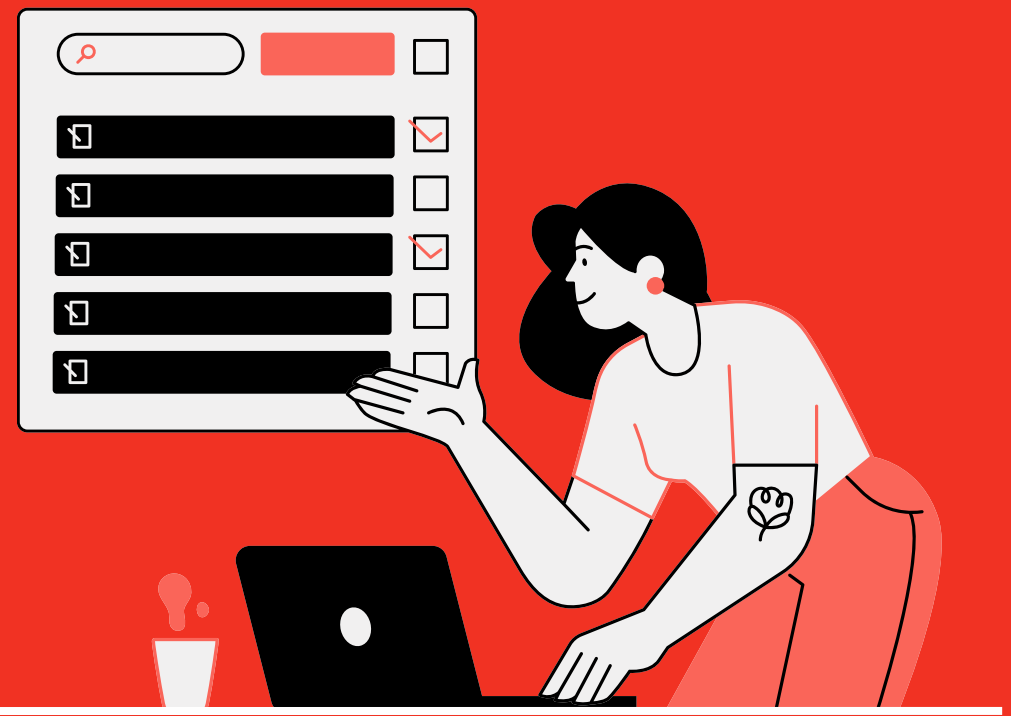
PREPARED?

Having a comprehensive emergency management plan can reduce the impact of these incidents by up to 70%, ensuring the safety and success of your event.

Know what to do

WWW.FIRSTCLASSEVENTSERVICES.COM

10 Essential Steps: Why Emergency Planning and Management Matter

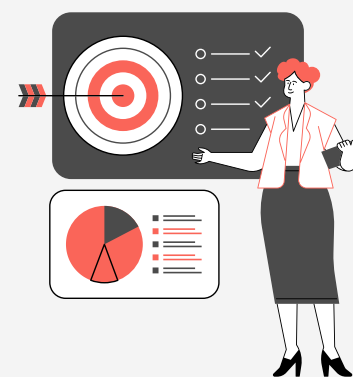


FIRST CLASS PLANNING



RISK ASSESSMENT

Identifying potential risks early allows you to foresee what could go wrong and proactively address vulnerabilities before they escalate into actual problems.



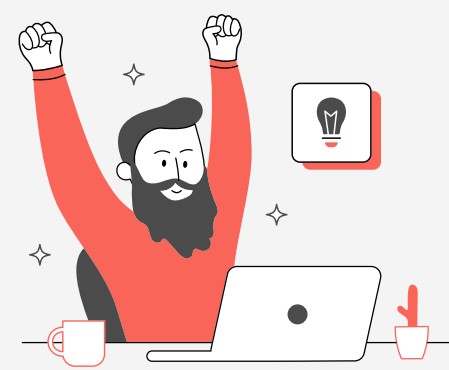
PREPAREDNESS

Proper planning ensures that everyone involved is ready to act in case of an emergency, minimizing confusion and ensuring a coordinated response.



LEGAL COMPLIANCE

Meeting safety and regulatory requirements protects you from legal liabilities and ensures your event complies with local laws and ordinances.



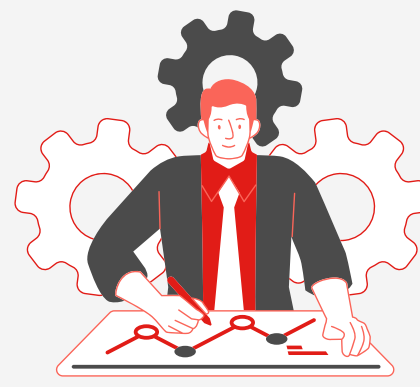
GUEST SAFETY

Protecting the wellbeing of your guests is crucial. An emergency plan guarantees their safety by preparing for medical, environmental, and security threats.



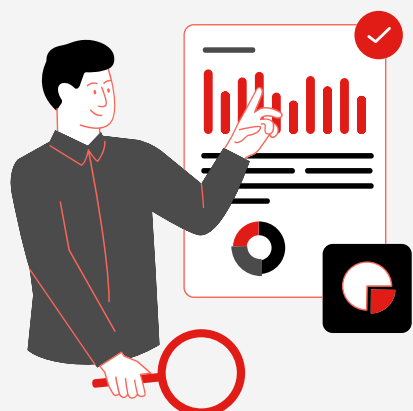
EFFICIENT CRISIS RESPONSE

A well-coordinated crisis response prevents small issues from becoming disasters, reducing downtime and minimizing damage to property or reputation.



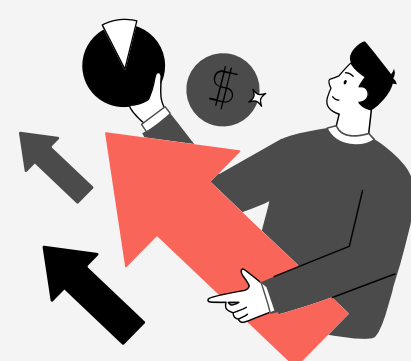
CLEAR COMMUNICATION

Establishing clear communication protocols during emergencies helps ensure that staff, guests, and first responders know exactly what to do.



ON-SITE RISK MANAGEMENT

Having a trained team on-site to monitor and manage risks ensures immediate, effective responses to any emergencies that arise.



BUSINESS CONTINUITY

A solid emergency management plan helps maintain business operations by reducing disruptions and ensuring events proceed smoothly despite challenges.



COST REDUCTION

Emergency planning can prevent costly accidents and legal battles, reducing financial losses and safeguarding your investment in the event.



POST-EVENT ANALYSIS

Reviewing the effectiveness of emergency responses allows you to improve future plans, making your operations more resilient and secure for future events.

SMART



S

STRATEGIC

Our emergency plans are tailored to meet the specific needs of each event. We conduct thorough risk assessments and create customized strategies to ensure every potential threat is addressed proactively.

M

MEASURABLE

We set clear, measurable goals for safety protocols and emergency responses. Whether it's response time or guest safety outcomes, our plans ensure you can track success and continuously improve.

A

ACTIONABLE

Every aspect of our emergency management plan is designed to be actionable. From training staff to real-time crisis management, we equip teams with clear steps and tools to respond effectively.

R

RELIABLE

Our plans are built on proven methods and best practices, ensuring they are dependable under any circumstances. You can trust that our team is prepared to handle any situation with precision and professionalism.

T

TIMELY

In emergencies, time is critical. Our plans are structured for quick, decisive action to minimize risks and protect both people and assets, ensuring swift responses that prevent escalation.

Have a Plan?

Here's why you should hire us!

In today's fast-paced and ever-evolving world, having a robust emergency management plan is not just a necessity but a critical component of successful event planning. Whether you're hosting a large corporate function, a high-profile public gathering, or a private event, the unexpected can happen. Having a comprehensive emergency management strategy ensures that you are prepared for any situation, safeguarding the wellbeing of your guests and the success of your event.

At First Class Event Services, we understand the importance of proactive planning and effective management in mitigating risks and handling crises. Our dedicated planners are here to guide you through every step of the emergency planning process, ensuring that all necessary training is conducted, requirements are met, and professional standards are upheld. We specialize in organizing events to meet all safety and regulatory requirements, hiring top-tier professionals, and delivering exceptional service tailored to your specific needs.

Our emergency management packages are designed to offer varying levels of support, from foundational planning to comprehensive crisis management, ensuring that no matter the scale or complexity of your event, you're covered. With our extensive expertise and commitment to excellence, we provide peace of mind and unparalleled support, ensuring that your events run smoothly and securely.

Explore our range of packages below to find the perfect solution for your needs and experience the highest level of emergency management and planning expertise.

FIRSTCLASSEVENTSERVICES.COM



ESSENTIAL

PACKAGE

The Essential Emergency Management Package offers a fundamental approach to emergency planning, designed to establish a solid foundation for event safety. This package includes tailored emergency response plans, essential training, and on-demand support to handle basic emergencies effectively.

Pricing:

- Monthly Subscription: \$1,500
- Annual Contract: \$15,000
- Annual Deal: 10% discount on the annual contract (\$13,500)

Customized Emergency

Response Plan Development:
Basic risk assessment and emergency response planning for various scenarios.

On-Site Risk Management Team:
Essential on-site support to monitor safety protocols.

Safety Training for Event Staff and Vendors:
One training session on emergency procedures.

Coordination with Local Emergency Services:

Basic liaison with local authorities.

Best For: Small to mid-sized organizations that need a foundational emergency management solution without extensive resources. Ideal for those starting to establish emergency protocols.

Why It's Best: Offers a cost-effective solution with essential services and flexibility to scale up. Provides reliable support and expertise in emergency planning.



STANDARD

PACKAGE

The Standard Emergency Management Package delivers a comprehensive approach with in-depth planning and support. It includes a detailed emergency response plan, regular training, and on-site support, ensuring a well-rounded emergency management strategy.

Pricing:

- Monthly Subscription: \$2,500
- Annual Contract: \$25,000
- Annual Deal: 15% discount on the annual contract (\$21,250)

Customized Emergency Response Plan Development:

Detailed planning based on specific event needs.

On-Site Risk Management Team:

Support during key events, including crowd control and evacuation procedures.

Safety Training for Event Staff and Vendors:

Two training sessions annually.

Coordination with Local Emergency Services:

Ongoing collaboration with authorities.

Real-Time Monitoring and Emergency Operations Center (EOC):

Setup of an EOC for enhanced event monitoring.

Best For: Mid-sized organizations that host a range of events and need thorough planning and support. Suits those requiring a more structured approach to emergency management.

Why It's Best: Provides a balanced combination of planning and practical support with regular training and real-time monitoring. Ensures that emergency protocols are effective and staff are well-prepared.



PREMIUM CRISIS MANAGEMENT PACKAGE

The Premium Crisis Management Package offers an advanced solution with comprehensive emergency planning and support. This package includes frequent training, advanced crisis communication, and premium support for high-profile or large events.

Pricing:

- Monthly Subscription: \$4,000
- Annual Contract: \$40,000
- Annual Deal: 20% discount on the annual contract (\$32,000)

Customized Emergency Response Plan Development:

Advanced planning with multiple scenario protocols.

On-Site Risk Management Team:

24/7 support with real-time risk assessment.

Safety Training for Event Staff and Vendors:

Quarterly training sessions.

Coordination with Local Emergency Services:

Coordination with top-tier emergency services.

Real-Time Monitoring and Emergency Operations Center (EOC):

Setup of an EOC for enhanced event monitoring.

Medical Response Team Coordination:

On-site medical teams and mobile medical stations.

Crisis Communication Plan:

Detailed strategy for effective communication during emergencies.



ELITE CRISIS RESPONSE

PACKAGE

The Elite Crisis Response Package provides an all-inclusive solution for high-profile events requiring top-tier crisis management. This package features extensive planning, regular training, and dedicated support for managing complex emergencies.

Pricing:

- Monthly Subscription: \$6,000
- Annual Contract: \$60,000
- Annual Deal: 25% discount on the annual contract (\$45,000)

Customized Emergency Response Plan Development:

Fully integrated and customized emergency plans.

On-Site Risk Management Team:

24/7 support with multiple teams.

Safety Training for Event Staff and Vendors:

Monthly training sessions.

Coordination with Local Emergency Services:

Comprehensive coordination with multiple agencies.

VIP Protection and Secure Transport:

Specialized security and secure transportation for high-profile guests.

Medical Response Team

Coordination:

Specialized medical support and first aid stations.

Crisis Communication and Media Handling:

Advanced communication strategy and media management.



ULTIMATE EMERGENCY MANAGEMENT PACKAGE

The Ultimate Emergency Management Package offers the highest level of service for organizations demanding exceptional emergency management. This package includes all-inclusive planning, frequent training, and extensive support for the most complex and high-profile events.

Pricing:

- Monthly Subscription: \$8,000
- Annual Contract: \$80,000
- Annual Deal: 30% discount on the annual contract (\$56,000)

Customized Emergency Response Plan

Development:

Comprehensive and fully integrated emergency response plans.

On-Site Risk Management Team:

24/7 support with multiple teams for continuous monitoring.

Safety Training for Event Staff and

Vendors:

Bi-weekly training sessions and emergency drills.

Coordination with Local Emergency

Services:

Extensive coordination with top-tier emergency services.

Medical Response Team Coordination:

On-site medical teams and mobile stations.

Crisis Communication and Media Handling:

Comprehensive communication strategy and media management.

Environmental Hazard Planning:

Plans to mitigate risks from natural disasters.

Insurance Consultation:

Assistance in securing specialized event insurance.

Post-Event Analysis and Reporting:

Detailed post-event report and recommendations.

Event Simulation:

Regular event simulation exercises.

WHY IS AN EMERGENCY PLAN IMPORTANT?

1

80% of businesses that experience a major disaster without a plan fail within 18 months.

Emergency planning ensures business continuity, reducing the risk of long-term disruption or closure.

2

Events with comprehensive emergency plans see a 65% reduction in on-site accidents.

Proper preparedness minimizes the likelihood of injuries and ensures swift action when needed.

3

93% of event organizers believe emergency management improves guest confidence and trust.

A strong plan reassures attendees, making them feel safer and more secure at your event.

4

Organizations with crisis management teams save 23% in costs related to emergency incidents.

Effective crisis response can significantly reduce financial losses from lawsuits, damages, and operational delays.

5

25% of public events face legal action due to insufficient emergency planning.

Having a professional emergency management team helps avoid costly legal issues by ensuring compliance with safety regulations.

6

Events with on-site emergency management teams respond to incidents 40% faster.

Rapid response is crucial in emergencies, and professional teams ensure immediate action is taken to prevent escalation.

Frequently Asked Questions

01

Why do I need an emergency management plan for my event?

An emergency management plan ensures that potential risks are identified and addressed before they become problems. Whether it's severe weather, medical issues, or security concerns, having a plan in place protects your guests, your event, and your reputation.

02

What types of events benefit from emergency planning and management?

Every event, from weddings and corporate conferences to large public gatherings, can benefit from emergency planning. The larger and more complex the event, the more crucial it is to have a comprehensive emergency strategy in place.

03

How does your service differ from hiring in-house staff for emergency planning?

Our team consists of highly trained professionals with specialized experience in emergency management, safety protocols, and crisis response. Unlike in-house staff, we bring dedicated expertise and resources tailored specifically to managing emergencies, offering a higher level of preparedness and peace of mind.

04

What does your service include beyond creating the emergency plan?

In addition to creating a customized plan, we provide on-site risk management teams, coordination with local emergency services, real-time monitoring, crisis communication strategies, and post-event analysis. We also offer staff training to ensure everyone knows their role during an emergency.

Are you prepared?

Contact Us at:
www.firstclasseventservices.com

05

What are the benefits of opting for an annual contract instead of a one-time service?

An annual contract provides continuous support, including regular updates to your emergency plans, ongoing training for staff, and a guaranteed response team for all your events throughout the year. Additionally, annual contracts come with discounted rates and priority access to our services.